

Virtual Data Center

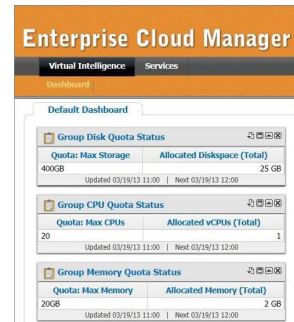
Virtual Data Center is a virtual private cloud computing service that enables customers to leverage resource reservation pools (processor, memory and disk) of computing assets at Evolve IP's world-class data centers. Utilizing these guaranteed resources, customers have the ability to create virtual machines and allocate and provision computing assets on demand from the Evolve IP OSSmosis Enterprise Cloud Management (ECM) portal.

☁ WHY MOVE YOUR SERVERS TO THE CLOUD?

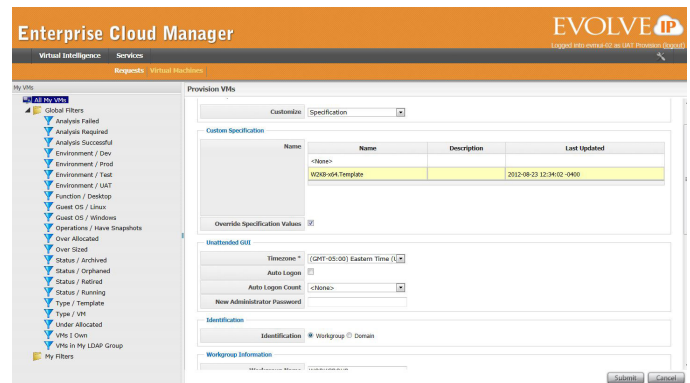
Virtual Data Centers provide IT professionals with the built-in control and resiliency of an enterprise-class computing environment coupled with the scalability and flexibility of the virtual private cloud. In addition, Virtual Data Centers deliver the privacy and security that companies require for production computing environments. Because Virtual Data Centers are provided out of Evolve IP's private cloud, customers have multiple options to establish private connectivity as if the servers were still sitting in the customer's on-premise data center.

Virtual Data Center Standard Features:

- **Guaranteed Resource Reservation** – Compute resources 100% allocated
- **Ability to oversubscribe** computing resources within allocated pool
- **Service Level Agreement** – 99.999% uptime and availability
- **Enterprise grade compute resources** delivered from Evolve IP's
 - Enterprise-class cluster
 - **Best-in-Class** virtualization technology from VMware and EMC
 - True **Customer Isolation** with Private VLAN
 - **High Availability** – Hardware Failover Built-in
 - **Private Security** - True Stateful-inspection Firewall
- **Full administrative control** for customers to build servers at will
- **Award-winning Cloud Management Portal** for self-provisioning virtual machines
- Multiple **Operating System** Options
- Built-in Server **Applications**
- **Secure and Flexible Connectivity options** with other Evolve IP Products (Evolved Office HPBX, Evolved Office Desktop)



OSSmosis Enterprise Cloud Manager (ECM) Manage reserved resource pools for on-demand provisioning of CPU, Memory, and Disk.



ECM Provisioning Configure new virtual servers on-demand using custom or built-in templates.

Virtual Data Center Benefits

- **Simplicity** – Replace multiple on-site servers, support, upgrades and backup with a simple “cloudsourced” service.
- **Economics** – Pay for guaranteed computing resources that are needed, for a predictable monthly fee.
- **Productivity** – Users can gain access to virtual servers from any location, while administrators can support and deploy from a centralized location.
- **Stability** – Services from Evolve IP are delivered from geographically diverse technology centers and accessible from any location, ensuring that cloud services are available regardless of conditions at your location.
- **Scalability** – Meet business requirements by adding additional resources to virtual machines, or adding additional virtual machines inside resource pools.
- **Performance** – Apply computing power to servers “virtually” to improve application performance and enjoy access to limitless bandwidth options.
- **Control** – Enjoy unmatched control and point-and-click configuration over all services through our award-winning OSSmosis Cloud Management Portal.
- **Security** – Physical and virtual security are no longer your issue. True customer isolation enables you leverage the power of the cloud without the risk.

Enterprise Cloud Management

Evolve IP's industry-leading OSSmosis enterprise cloud manager (ECM) helps customers take better advantage of its award-winning cloud services platform. Developed with RedHat / ManageIQ software, it provides real-time information on a customer's virtual resources along with the ability to easily modify and control them. With the OSSmosis ECM Customers can control the power states of their virtual servers, manage resource allocation and direct console access. They can also self-serve existing production computing environments or procure reserved pools of infrastructure by the unit and build on-demand. This service, unique to private clouds, allows businesses to meet changing requirements rapidly and economically in a pay-as-you-go environment, simplifies the self-service life cycle and helps leaders enforce business and IT policies through secure, role-driven access.

Evolve IP's Technology Centers



East Coast Locations

401 N Broad St. Philadelphia & Wayne, Pa.

Evolve IP's east coast technology centers are located in Wayne, Pa and downtown Philadelphia .



West Coast

Super NAP, Las Vegas, NV.

Evolve IP's Las Vegas Technology Center is located in the Switch SuperNAP.



The power to do more

